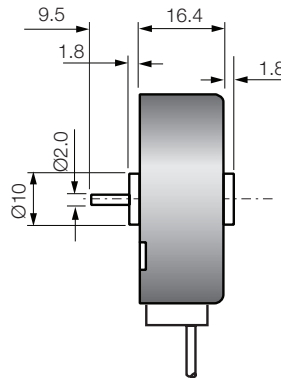
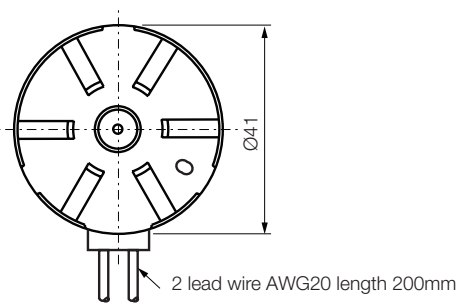


# AC Motors

4116

Issue 06:CN3815

Units: mm



## General Specification

Frequency	50/60Hz
Speed	500/600rpm
Input power	2.5W
Running torque	1.2mNm
	@ nominal voltage and 50Hz
Temperature rise	50°C
Ambient temperature range	0 to 60°C
Dielectric strength	1500V AC 1 sec.
Insulation class	E
Reliability	5x10 <sup>6</sup> starts (min)
Weight	75g

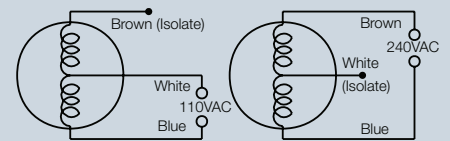
Voltage* (V)	Current @50Hz (mA)	Lead colours
240	13	Brown Blue
110	26	White Blue
48	60	Brown White
24	125	Blue Blue
12	250	Brown Brown
6	500	White White
240/110	13/26	Brown Blue White

\* Please contact Rotalink if you wish to run this motor at other voltages

## Motor Options

Clockwise, anti-clockwise or bi-directional  
Alternative voltages  
Alternative lead lengths  
UL recognition available (no E63763)

## Dual voltage Connections



## Contact:

[www.rotalink.com](http://www.rotalink.com)  
[info@rotalink.com](mailto:info@rotalink.com)  
 T: +44 (0)1460 72000

Rotalink Limited  
 Cropmead, Crewkerne  
 Somerset TA18 7HQ, UK

[www.rotalink.com](http://www.rotalink.com)