

# Gearboxes

Type 210

Hybrid

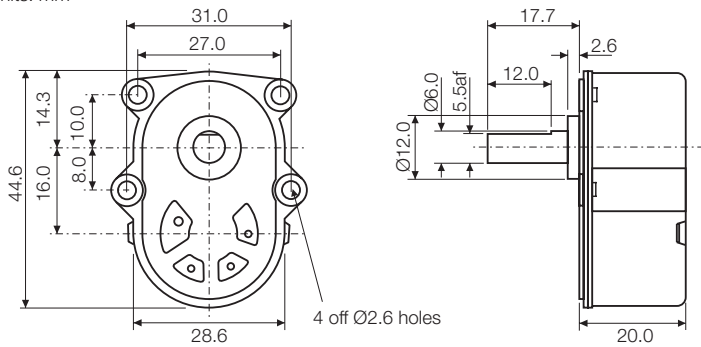
Issue 03:CN2184



# Rotalink

Miniature Motors, Transmission and Control

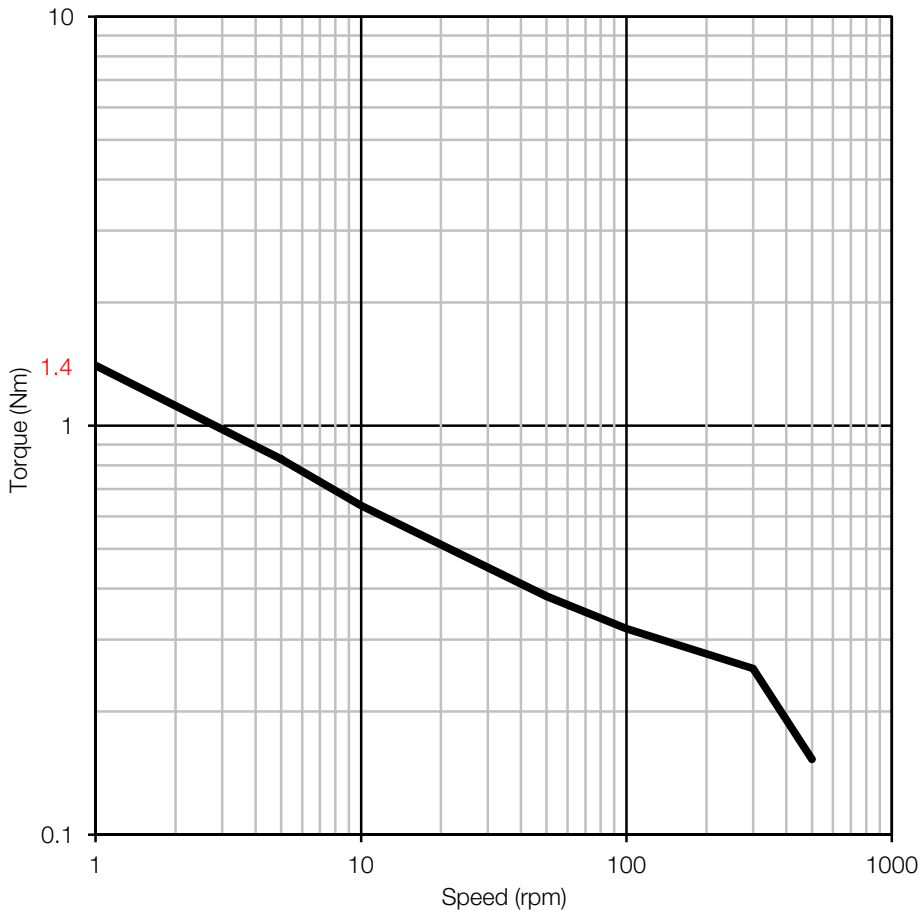
Units: mm



## Typical Ratios

26:1 (8875:348)	175:1 (11000:63)
31:1 (69225:2233)	218:1 (13750:63)
38:1 (131350:3451)	349:1 (22000:63)
51:1 (8875:174)	437:1 (27500:63)
62:1 (138450:2233)	698:1 (44000:63)
76:1 (262700:3451)	873:1 (55000:63)
87:1 (5500:63)	1397:1 (88000:63)
109:1 (6875:63)	2794:1 (176000:63)

## Characteristics



## General Specification

Zinc plated pressed steel gearbox case and front cover with 4 point fixing. Spur gears running on fixed steel spindles leading to a planetary output stage. Engineering polymer gears, stainless steel shaft, ball race front and nylon back bearing.

Maximum temperature, 80°C at the gearcase.

## Gearbox Options

Special shafts

Ball race bearing at rear

M2.5 threaded eyelets - Min bulkhead thickness for countersunk screws, 2mm

## Contact:

[www.rotalink.com](http://www.rotalink.com)

[info@rotalink.com](mailto:info@rotalink.com)

T: +44 (0)1460 72000

F: +44 (0)1460 74278

Rotalink Limited  
Cropmead, Crewkerne  
Somerset TA18 7HQ, UK

[www.rotalink.com](http://www.rotalink.com)