

# Gearboxes

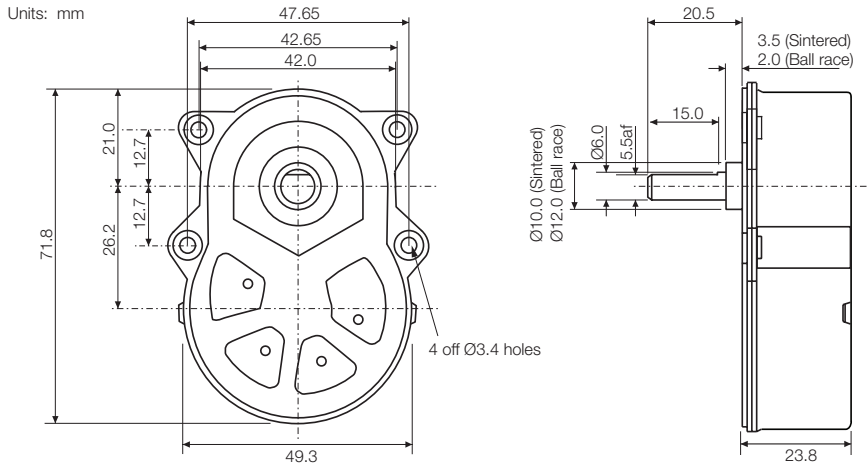
Type 220

Spur Ovoid

Issue 04:CN2803



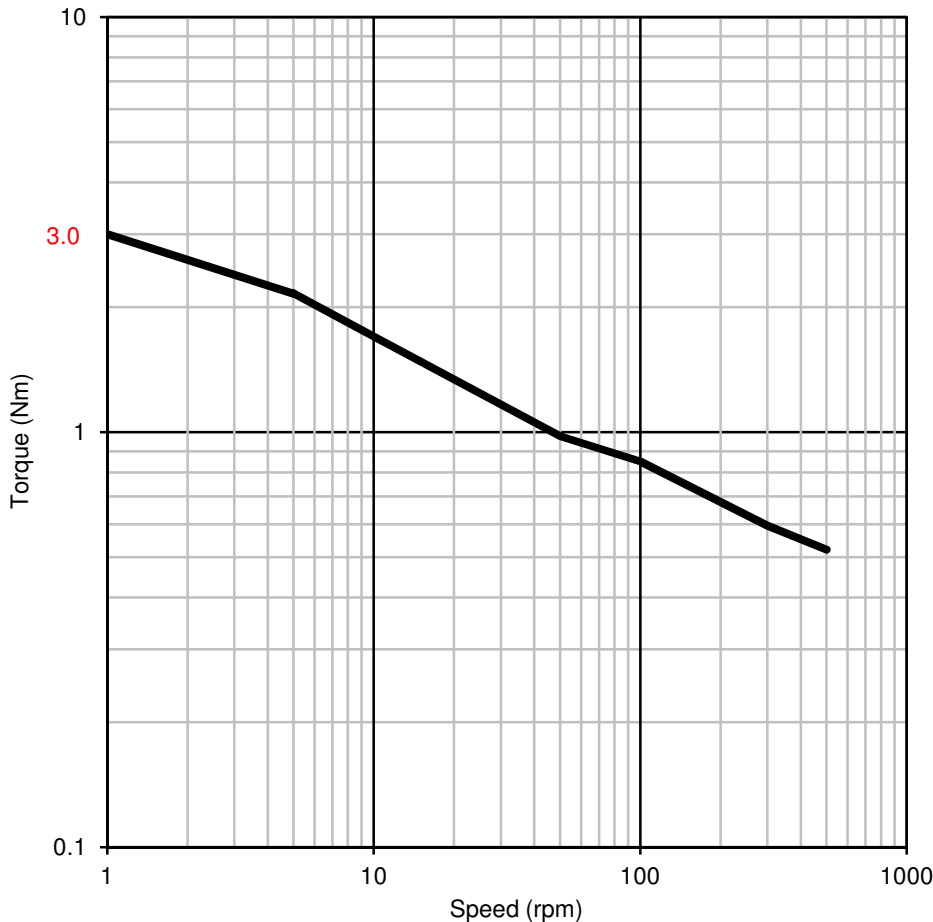
**Rotalink**  
Miniature Motors, Transmission and Control



## Typical Ratios

15:1	200:1
20:1	240:1
25:1	300:1
30:1	400:1
125:3	640:1
50:1	800:1
60:1	1080:1
80:1	1600:1
108:1	2560:1
120:1	3200:1
160:1	4320:1

## Characteristics



## General Specification

Zinc plated pressed steel gearbox case and front cover with 4 point fixing. Spur gears running on fixed steel spindles. Engineering polymer gears, stainless steel shaft, sintered bronze front and nylon back bearing. Maximum temperature, 80°C at the gearcase.

## Gearbox Options

Special shafts  
Ball race bearings  
M3 threaded eyelets - Min bulkhead thickness for countersunk screws, 2mm

## Contact:

[www.rotalink.com](http://www.rotalink.com)  
[info@rotalink.com](mailto:info@rotalink.com)  
T: +44 (0)1460 72000  
F: +44 (0)1460 74278

Rotalink Limited  
Cropmead, Crewkerne  
Somerset TA18 7HQ, UK

[www.rotalink.com](http://www.rotalink.com)