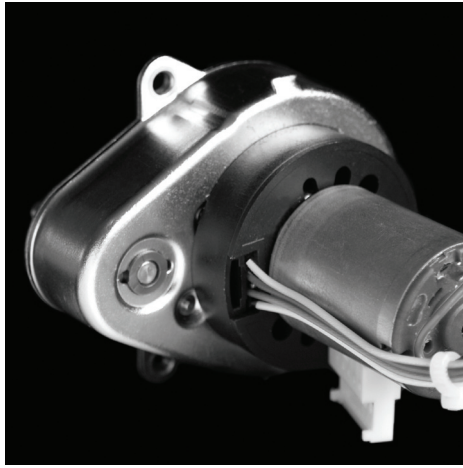


Gearboxes

Type 227

Spur Ovoid

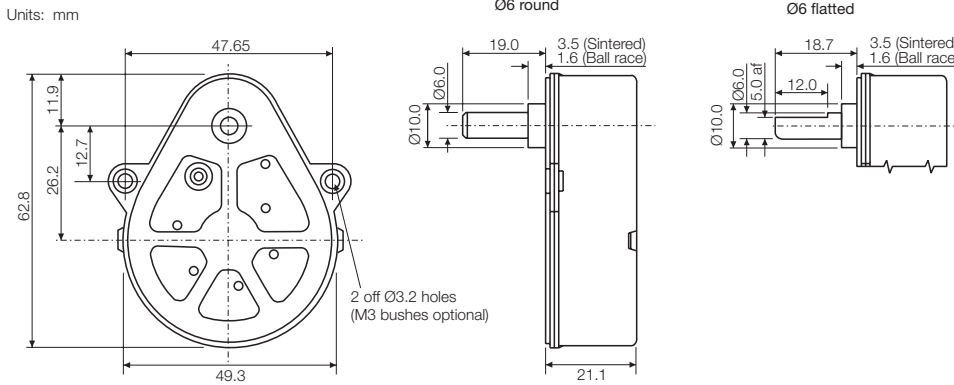
Issue 06:CN2184



Rotalink

Miniature Motors, Transmission and Control

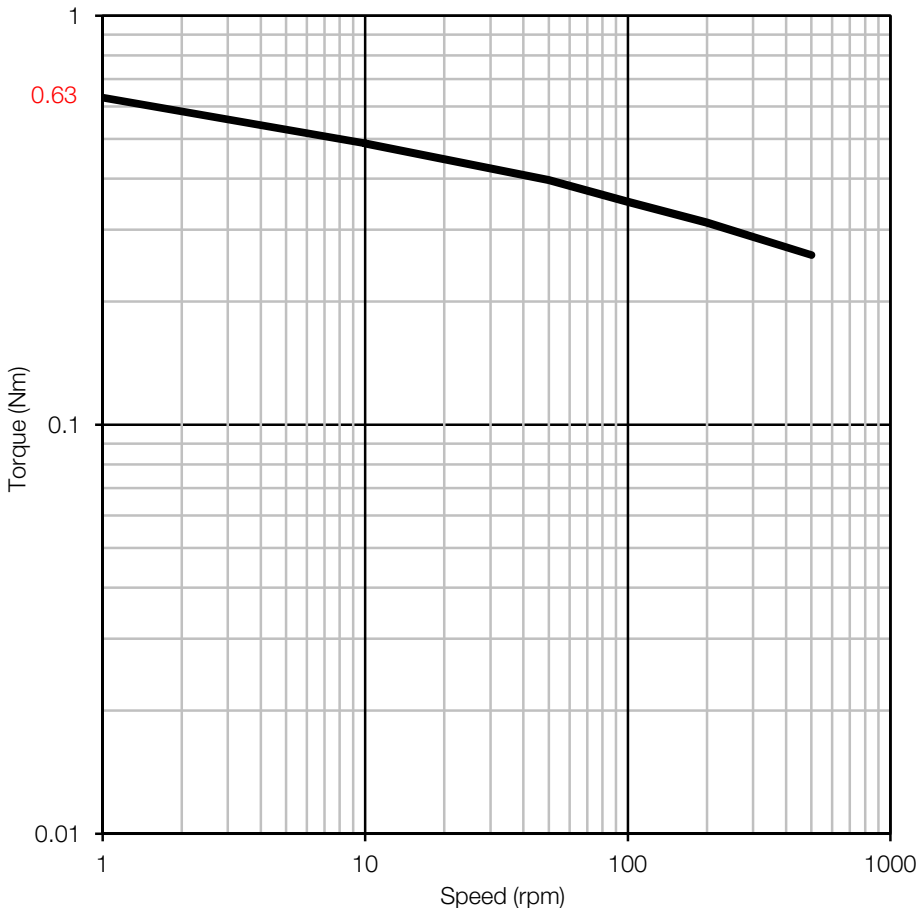
Standard shafts



Typical Ratios

25:2	125:1	2500:3
40:3	400:3	1000:1
50:3	150:1	3125:3
20:1	500:3	1250:1
25:1	625:3	1500:1
100:3	250:1	2000:1
125:3	625:2	2500:1
50:1	1000:3	3000:1
200:3	375:1	3750:1
250:3	1250:3	4500:1
625:6	500:1	6000:1
120:1	625:1	18000:1

Characteristics



General Specification

Zinc plated pressed steel gearbox case and front cover. Acetal spur gears running on fixed steel spindles. Stainless steel shaft, sintered bronze front and nylon back bearing. Maximum temperature, 80°C at the gearcase.

Gearbox Options

Special shafts
Ball race bearings
Slipping clutch. Nominal setting 70Ncm ($\pm 30\%$)
M3 threaded eyelets - Min bulkhead thickness for countersunk screws, 2mm

Contact:

www.rotalink.com
info@rotalink.com
T: +44 (0)1460 72000
F: +44 (0)1460 74278

Rotalink Limited
Cropmead, Crewkerne
Somerset TA18 7HQ, UK

www.rotalink.com