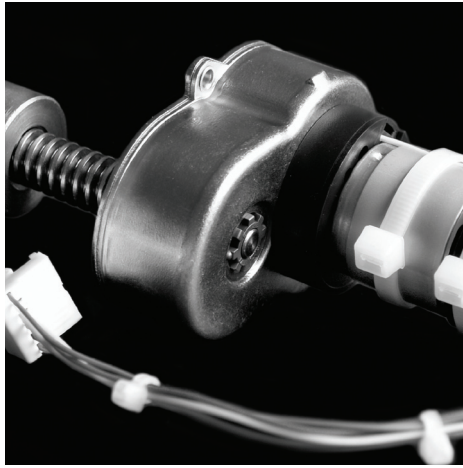


Gearboxes

Type 229

Spur Ovoid

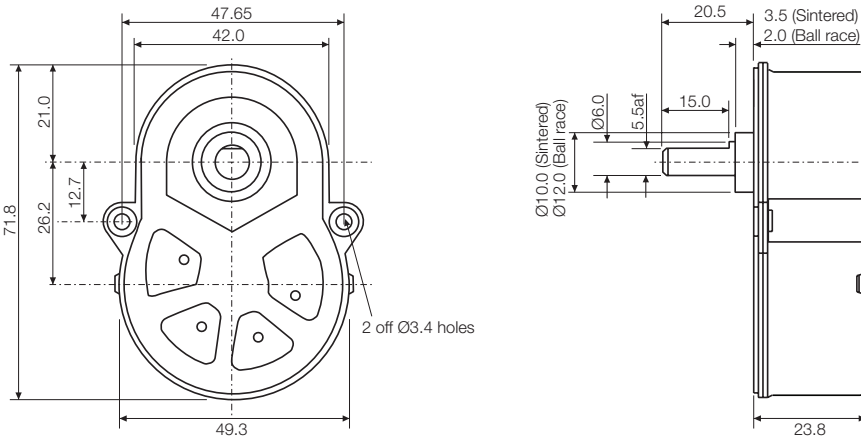
Issue 13:CN2803



Rotalink

Miniature Motors, Transmission and Control

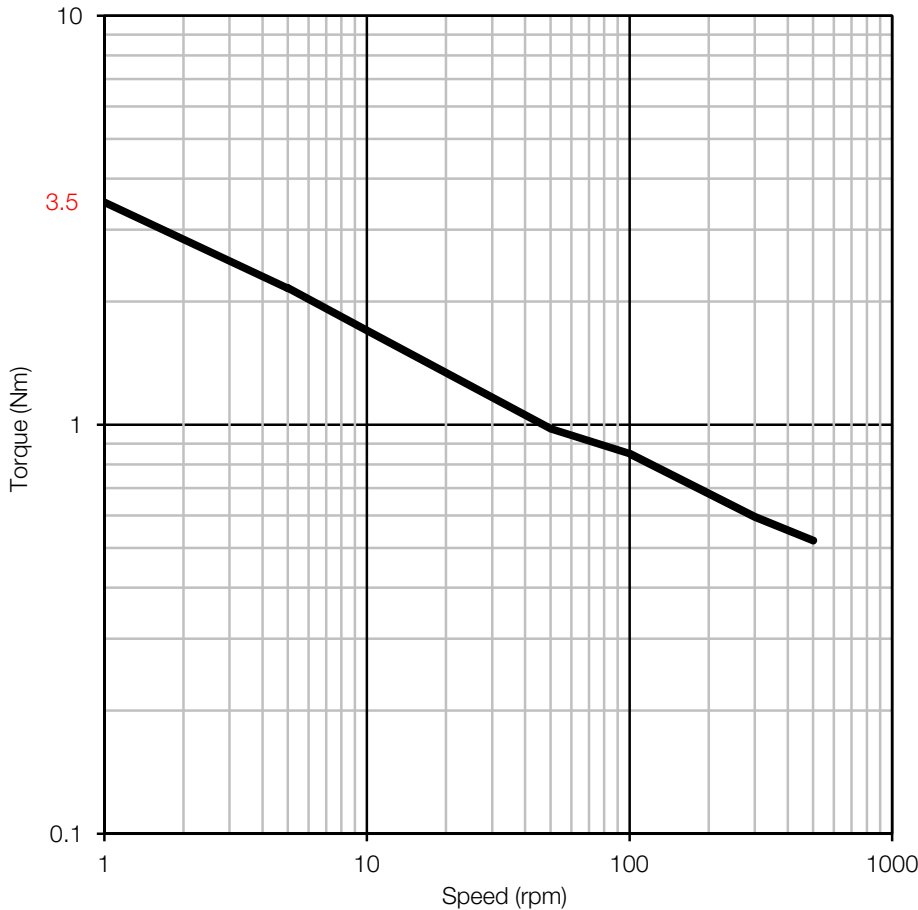
Units: mm



Typical Ratios

15:1	200:1
20:1	240:1
25:1	300:1
30:1	400:1
125:3	640:1
50:1	800:1
60:1	1080:1
80:1	1600:1
108:1	2560:1
120:1	3200:1
160:1	4320:1

Characteristics



General Specification

Zinc plated pressed steel gearbox case and front cover. Spur gears running on fixed steel spindles. Engineering polymer gears, stainless steel shaft, sintered bronze front and nylon back bearing. Maximum temperature, 80°C at the gearcase.

Gearbox Options

Special shafts
Ball race bearings
M3 threaded eyelets - Min bulkhead thickness for countersunk screws, 2mm

Contact:

www.rotalink.com
info@rotalink.com
 T: +44 (0)1460 72000
 F: +44 (0)1460 74278

Rotalink Limited
 Cropmead, Crewkerne
 Somerset TA18 7HQ, UK

www.rotalink.com