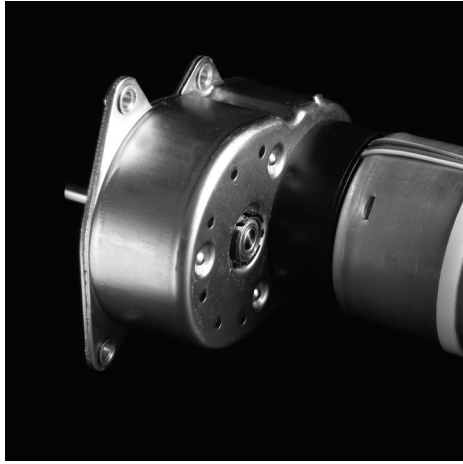


Gearboxes

Type 260

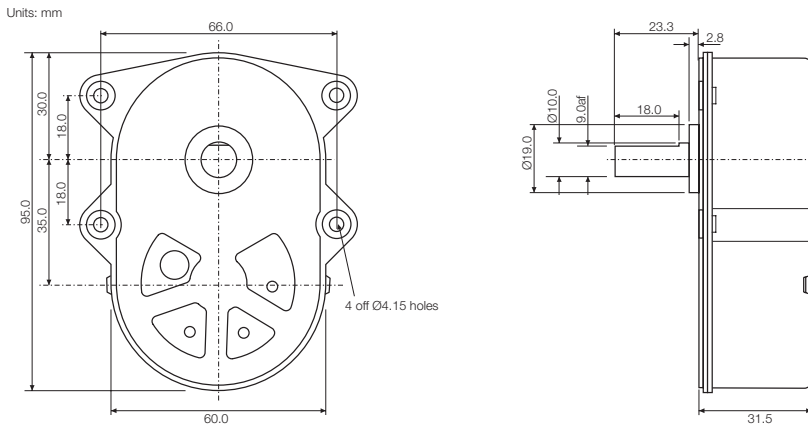
Hybrid

Issue 08:CN2817



Rotalink

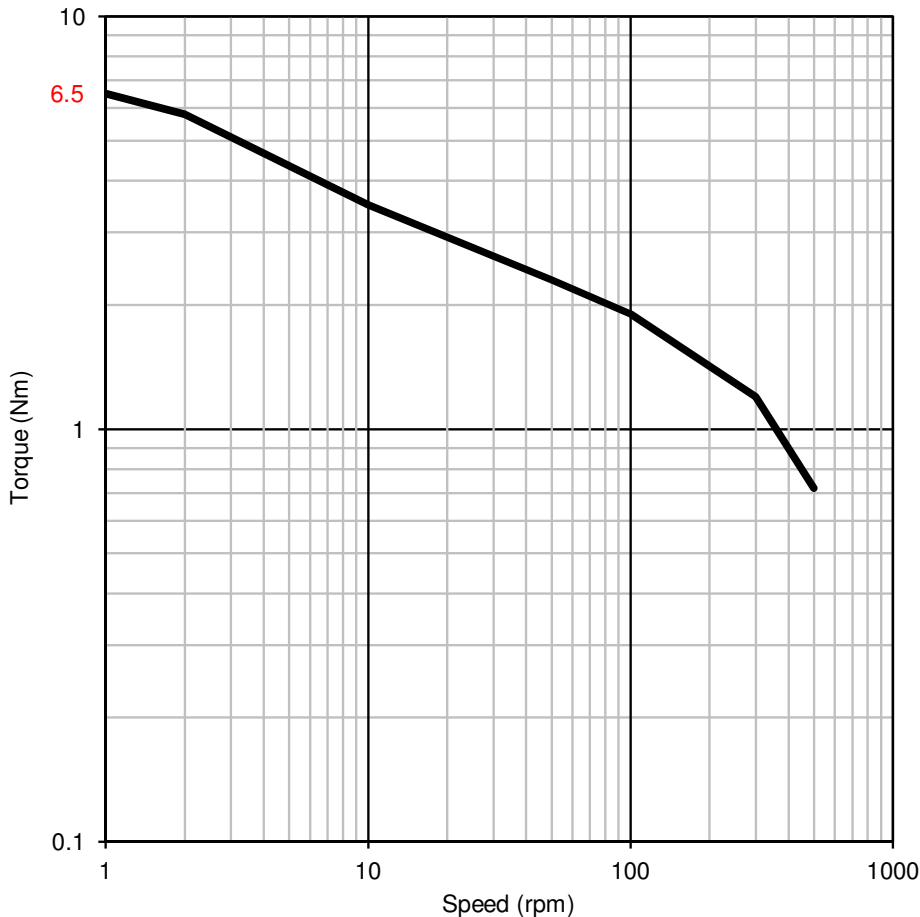
Miniature Motors, Transmission and Control



Typical Ratios

26:1 (151317:5740)	199:1 (9775:49)
31:1 (218569:7056)	249:1 (48875:196)
43:1 (302634:7105)	399:1 (19550:49)
51:1 (2572389:50225)	499:1 (48875:98)
60:1 (3715673:61740)	997:1 (48875:49)
83:1 (20579112:248675)	1995:1 (97750:49)
103:1 (2875:28)	

Characteristics



General Specification

Zinc plated pressed steel gearbox case and front cover with 4 point fixing. Spur gears running on fixed steel spindles leading to a planetary output stage. Engineering polymer gears, stainless steel shaft, ball race front and back bearing.

Maximum temperature, 80°C at the gearcase.

Gearbox Options

Special shafts including keyway
 M4 threaded eyelets - Min bulkhead thickness for countersunk screws, 2.5mm
 Other non-standard ratios

Contact:

www.rotalink.com
info@rotalink.com
 T: +44 (0)1460 72000
 F: +44 (0)1460 74278

Rotalink Limited
 Cropmead, Crewkerne
 Somerset TA18 7HQ, UK

www.rotalink.com