

Gearboxes

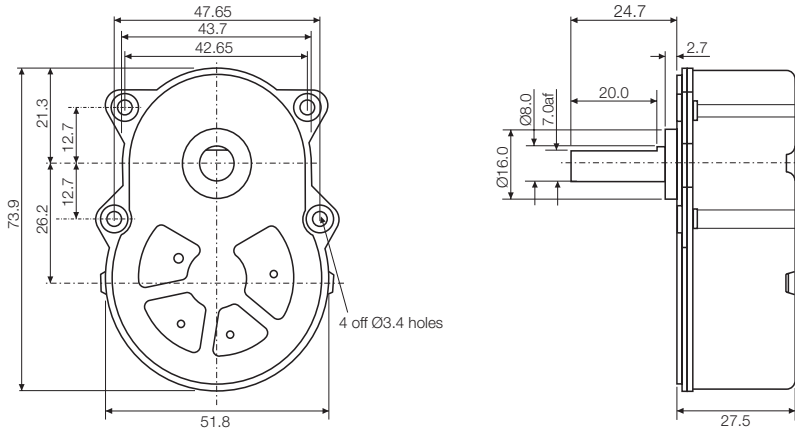
Type 330
Hybrid

Issue 05:CN3794



Rotalink
Miniature Motors, Transmission and Control

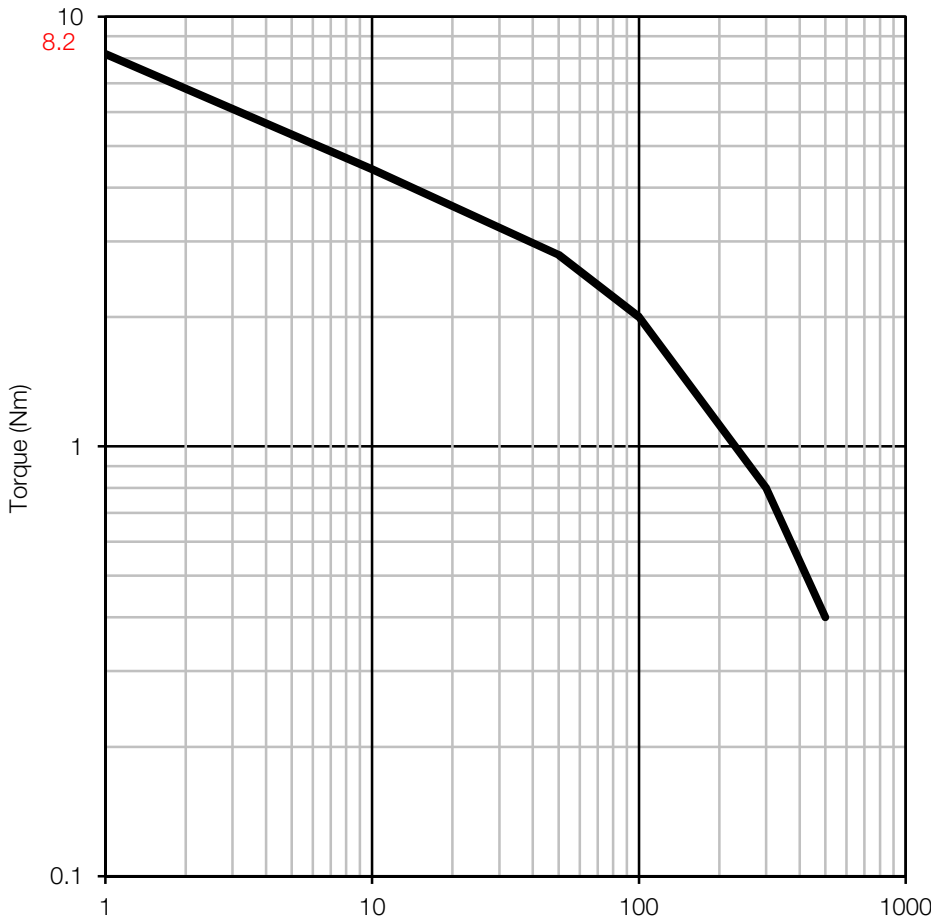
Units: mm



Typical Ratios

16:1 (375:23)	205:1 (2660:13)
22:1 (9750:437)	256:1 (3325:13)
29:1 (2625:92)	320:1 (16625:52)
32:1 (55125:1748)	400:1 (83125:208)
43:1 (1000:23)	639:1 (16625:26)
48:1 (21000:437)	767:1 (9975:13)
58:1 (760:13)	1023:1 (13300:13)
80:1	2046:1 (26600:13)
128:1 (3325:26)	4092:1 (53200:13)
164:1 (3325:27)	

Characteristics



General Specification

Zinc plated pressed steel gearbox case and front cover with 4 point fixing. Spur gears running on fixed steel spindles leading to a planetary output stage. Ultra polymer gears, stainless steel shaft, ball race front and back bearing.

Maximum temperature, 80°C at the gearcase.

Gearbox Options

Special shafts

Threaded eyelets - Min bulkhead thickness for countersunk screws, M3-2mm, M4-2.5mm
Other non-standard ratios

Contact:

www.rotalink.com
info@rotalink.com
T: +44 (0)1460 72000

Rotalink Limited
Cropmead, Crewkerne
Somerset TA18 7HQ, UK

www.rotalink.com