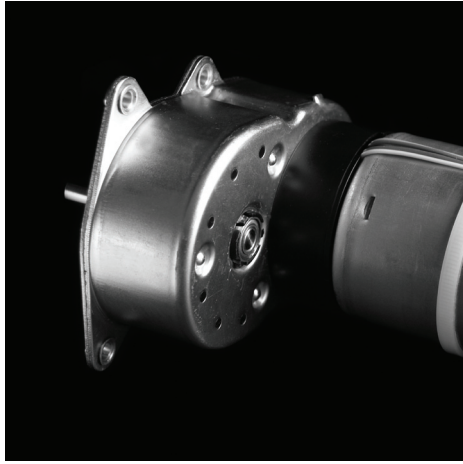


Gearboxes

Type 360
Hybrid

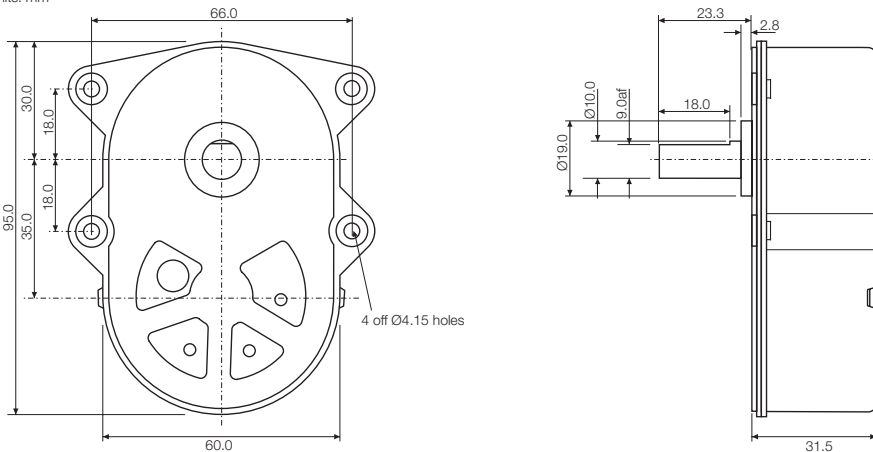
Issue 04:CN3799



Rotalink

Miniature Motors, Transmission and Control

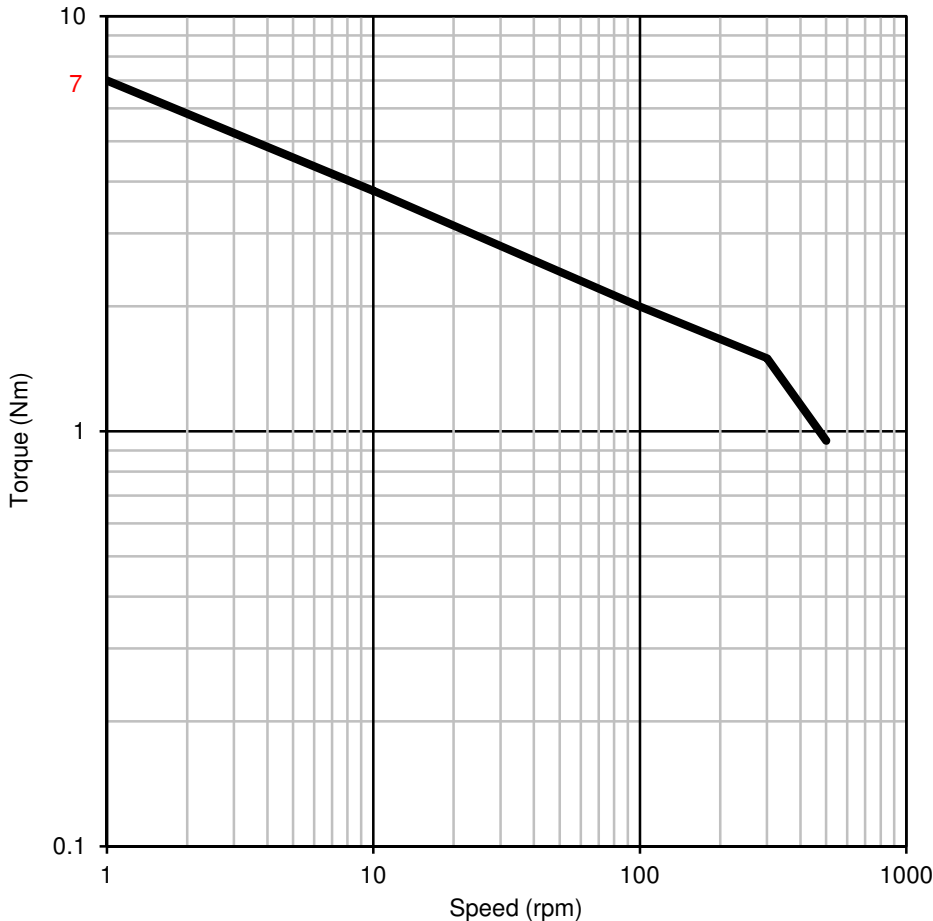
Units: mm



Typical Ratios

34:1 (24725:728)	152:1 (359375:2366)
43:1 (54625:1274)	244:1 (215625:884)
57:1 (175375:3094)	457:1 (3234375:7072)
82:1 (1365625:16562)	610:1 (1078125:1768)
109:1 (4384375:40222)	1220:1 (1078125:884)

Characteristics



General Specification

Zinc plated pressed steel gearbox case and front cover with 4 point fixing. Spur gears running on fixed steel spindles leading to a planetary output stage. Ultra polymer gears, stainless steel shaft, ball race front and back bearing.

Maximum temperature, 80°C at the gearcase.

Gearbox Options

Special shafts including keyway
M4 threaded eyelets - Min bulkhead thickness for countersunk screws, 2.5mm
Other non-standard ratios

Contact:

www.rotalink.com
info@rotalink.com
T: +44 (0)1460 72000

Rotalink Limited
Cropmead, Crewkerne
Somerset TA18 7HQ, UK

www.rotalink.com

This drawing and any information, descriptions and know how contained hereon (altogether "the drawing") are confidential and are the sole property of Rotalink Limited. Rotalink Limited owns all copyright, design right and all other intellectual property in the drawing and neither the drawing nor any part of it may be disclosed, loaned, copied, used for manufacturing or in relation to tenders or used for any other purpose without the express written permission of Rotalink Limited.

The contents of this data sheet are intended as reference material not product specification and are subject to alteration without prior notice. Please contact our sales team for detailed information.