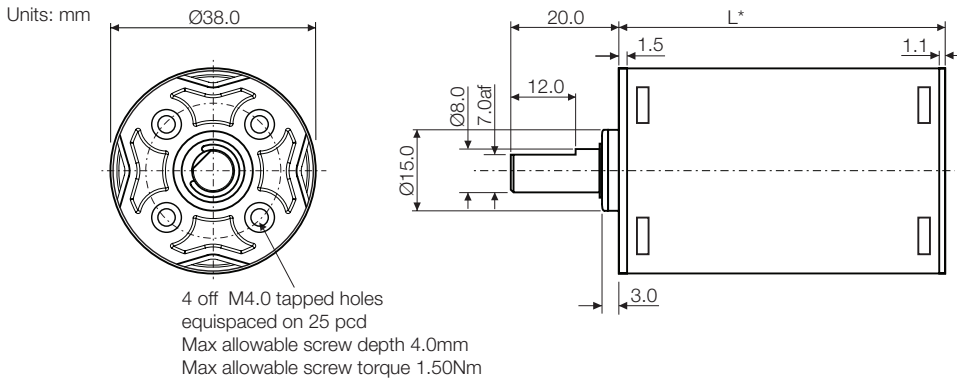


Gearboxes

Type PG38

Planetary Polymer

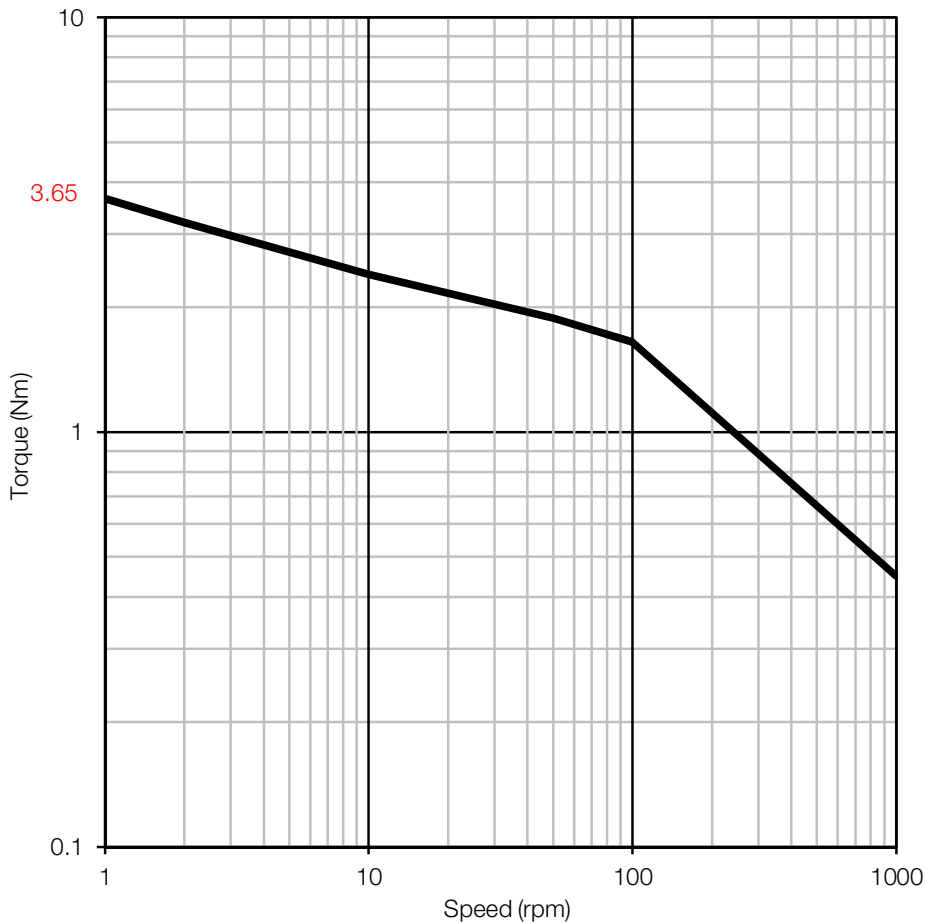
Issue 06:CN5240



Typical Ratios

4:1 (95:23)	204:1 (9405:46)
12:1 (285:23)	252:1 (21434375:85169)
15:1 (2375:161)	335:1 (2481875:7406)
19:1	446:1 (287375:644)
37:1 (855:23)	516:1 (1092025:2116)
42:1 (969:23)	613:1 (28215:46)
51:1 (27075:529)	755:1 (64303125:85169)
70:1 (857375:12167)	844:1 (893475:1058)
87:1 (437:5)	1005:1 (7445625:7406)
105:1 (209:2)	1197:1 (62046875:51842)
154:1 (81225:529)	1548:1 (3276075:2116)
183:1 (676875:3703)	2374:1 (218405:92)

Characteristics



General Specification

Steel rolled cover enclosing polymer end plates with ultra polymer annulus and gears. 4 point equispaced fixings. Stainless steel shaft with ball race bearing. Maximum temperature 80°C at the gearcase.

L* (Lengths dependent on gear ratio)

4:1	- 23.1 mm
12:1 - 19:1	- 30.6 mm
37:1 - 105:1	- 38.2 mm
154:1 - 516:1	- 45.7 mm
613:1 - 2374:1	- 53.3 mm

Contact:

www.rotalink.com
info@rotalink.com
 T: +44 (0)1460 72000

Rotalink Limited
 Cropmead, Crewkerne
 Somerset TA18 7HQ, UK

www.rotalink.com