

# Gearboxes

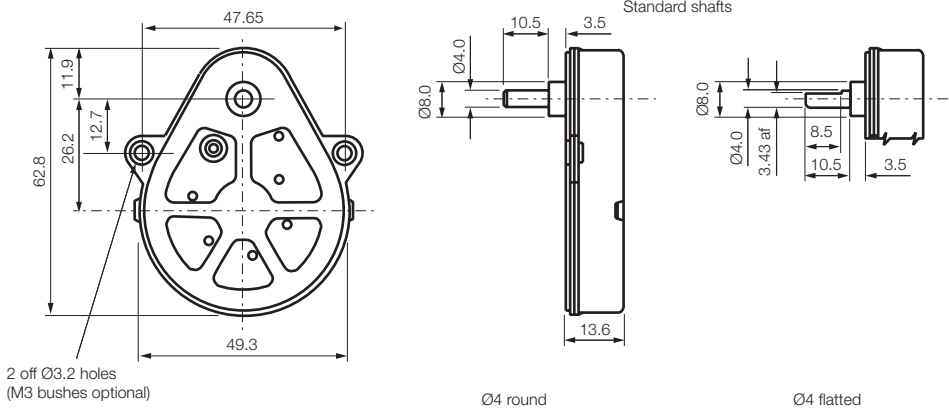
## Type 223

Issue 05



**Rotalink**  
Miniature Motors, Transmission and Control

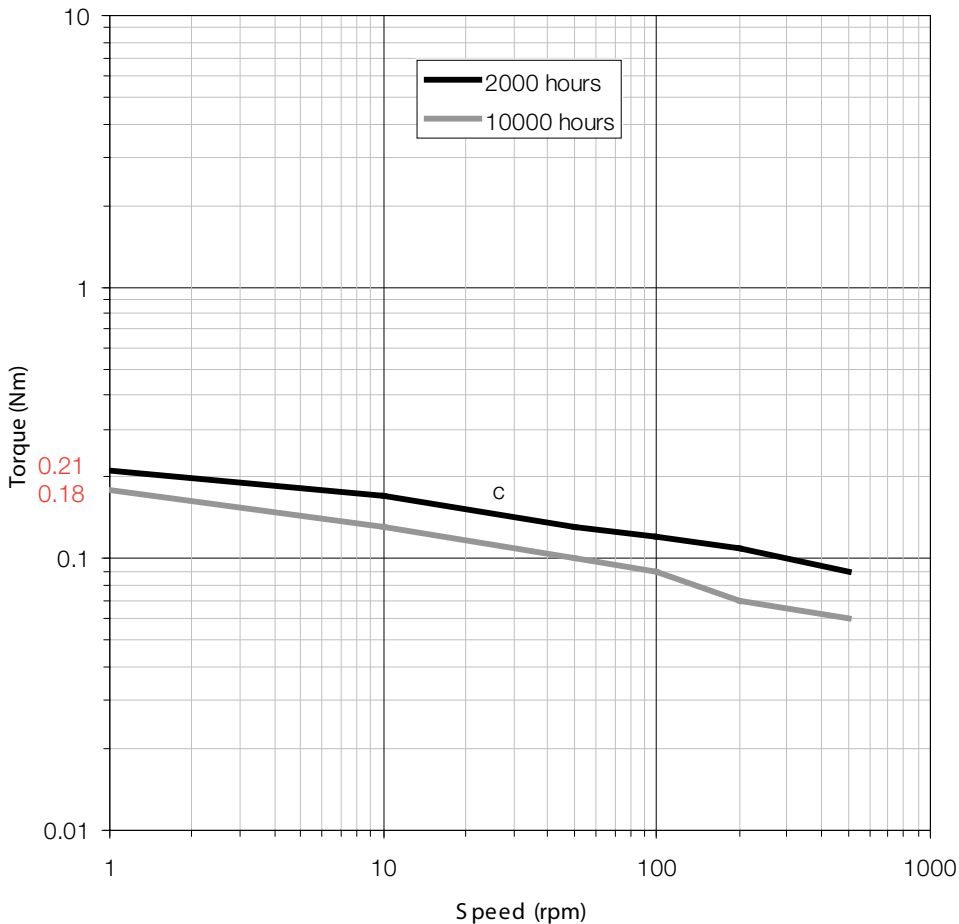
Units: mm



### Typical Ratios

20:1	150:1	2000:1
25:1	180:1	3000:1
30:1	200:1	3750:1
100:3	240:1	15000:1
40:1	250:1	18000:1
50:1	300:1	30000:1
60:1	400:1	45000:1
200:3	500:1	90000:1
80:1	600:1	360000:1
250:3	750:1	540000:1
100:1	800:1	720000:1
120:1	1000:1	1080000:1

### Characteristics



### General Specification

Zinc plated pressed steel gearbox case and front cover. Acetal spur gears running on fixed steel spindles. Stainless steel shaft, sintered bronze front and nylon back bearing. Maximum temperature, 80°C at the gearcase.

### Gearbox Options

Special shafts  
Ball race bearings  
M3 threaded eyelets - Min bulkhead thickness for countersunk screws, 2mm

### Contact:

[www.rotalink.com](http://www.rotalink.com)  
[info@rotalink.com](mailto:info@rotalink.com)  
T: +44 (0)1460 72000  
F: +44 (0)1460 74278

Rotalink Limited  
Cropmead, Crewkerne  
Somerset TA18 7HQ, UK

[www.rotalink.com](http://www.rotalink.com)