

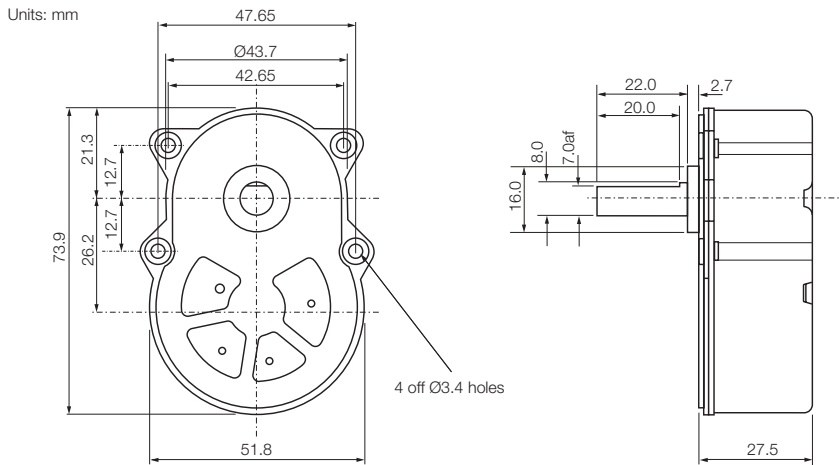
# Gearboxes

## Type 230

Issue 11



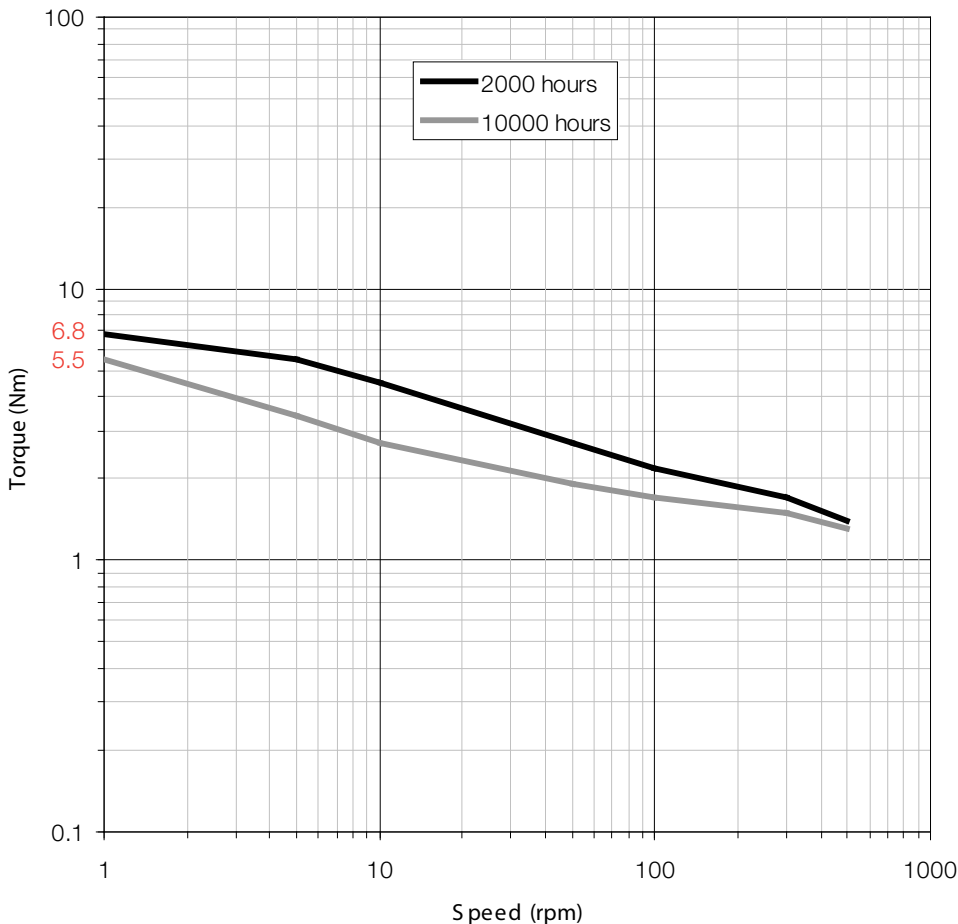
**Rotalink**  
Miniature Motors, Transmission and Control



### Typical Ratios

24:1 (34279:1410)	322:1 (816442:2535)
31:1 (3824557:122670)	403:1 (408221:1014)
48:1 (2022461:42300)	503:1 (2041105:4056)
62:1 (1096928:17625)	641:1 (600325:936)
80:1 (122385824:1533375)	1006:1 (2041105:2028)
161:1 (408221:2535)	2013:1 (2041105:1014)
201:1 (408221:2028)	2559:1 (864875:338)
252:1 (2041105:8112)	

### Characteristics



### General Specification

Zinc plated pressed steel gearbox case and front cover with 4 point fixing. Spur gears running on fixed steel spindles leading to a planetary output stage. Engineering polymer gears, stainless steel shaft, ball race front and nylon back bearing. Maximum temperature, 80°C at the gearcase.

### Gearbox Options

Special shafts  
Ball race bearing at rear  
Threaded eyelets - Min bulkhead thickness for countersunk screws, M3-2mm, M4-2.5mm  
Other non-standard ratios

### Contact:

[www.rotalink.com](http://www.rotalink.com)  
[info@rotalink.com](mailto:info@rotalink.com)  
T: +44 (0)1460 72000  
F: +44 (0)1460 74278

Rotalink Limited  
Cropmead, Crewkerne  
Somerset TA18 7HQ, UK

[www.rotalink.com](http://www.rotalink.com)