

Gearboxes

Type 229

Spur Ovoid

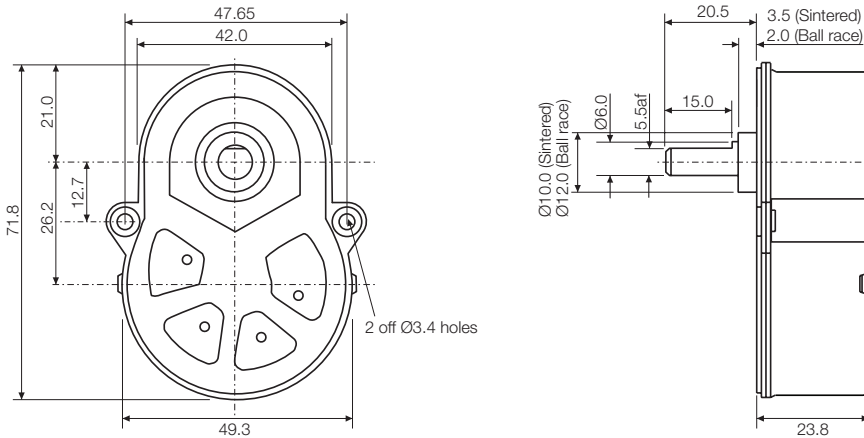
Issue 16:CN5262



Rotalink

Miniature Motors, Transmission and Control

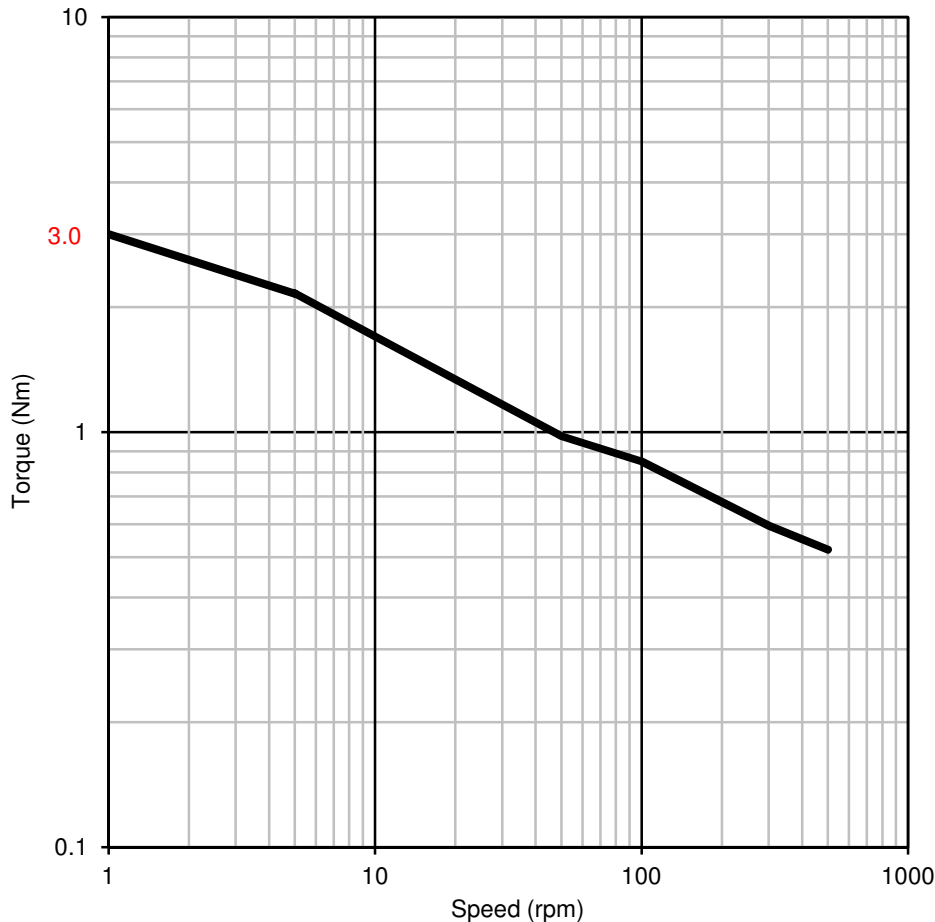
Units: mm



Typical Ratios

15:1	200:1
20:1	240:1
25:1	300:1
30:1	400:1
125:3	640:1
50:1	800:1
60:1	1080:1
80:1	1600:1
108:1	2560:1
120:1	3200:1
160:1	4320:1

Characteristics



General Specification

Zinc plated pressed steel gearbox case and front cover. Spur gears running on fixed steel spindles. Engineering polymer gears, stainless steel shaft, sintered bronze front and ball race back bearing. Maximum temperature 80°C at the gearcase.

Gearbox Options

Special shafts
Ball race bearings
M3 threaded eyelets - Min bulkhead thickness for countersunk screws, 2mm

Contact:

www.rotalink.com
info@rotalink.com
T: +44 (0)1460 72000

Rotalink Limited
Cropmead, Crewkerne
Somerset TA18 7HQ, UK

www.rotalink.com