

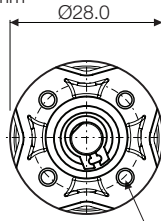
# Gearboxes

Type PG28

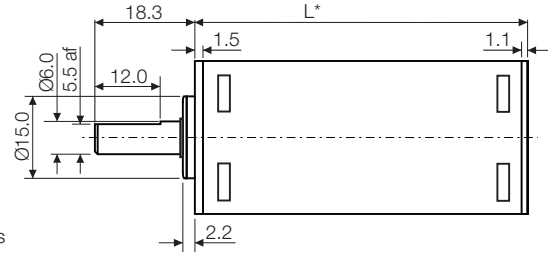
Planetary Polymer

Issue 08:CN5623

Units: mm

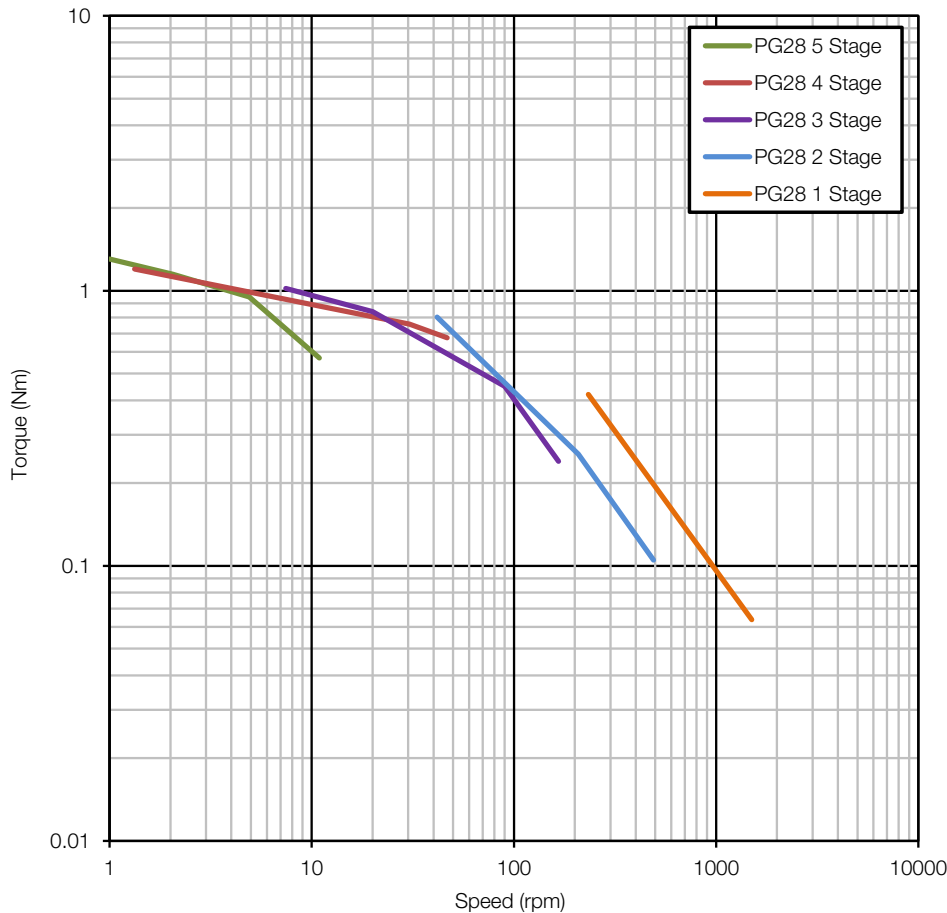


4 off M3.0 tapped holes  
 equispaced on 20 pcd  
 Max allowable screw depth 5.5mm  
 Max allowable screw torque 0.80Nm



Stage	1	2	3	4	5	
Length* mm	22.6	30.0	37.5	44.9	53.3	
Ratio	4:1 (30:7)	18:1 (900:49)	54:1 (10240:189)	193:1 (327680:1701)	394:1 (6969600:17689)	826:1 (3276800:3969)
		24:1	65:1 (3200:49)	232:1 (102400:441)	441:1 (21600:49)	892:1 (28835840:32319)
			79:1 (27000:343)	251:1 (901120:3591)	515:1 (185856:361)	995:1 (1024000:1029)
			85:1 (256:3)	280:1 (96000:343)	576:1 (576:1)	1200:1 (2880000:2401)
			103:1 (720:7)	337:1 (810000:2401)	753:1 (18816:25)	1563:1 (71280000:45619)
			134:1 (672:5)			2385:1 (16355328:6859)

Performance characteristics and general specification are from calculated data.



## General Specification

Steel rolled cover enclosing polymer end plates with ultra polymer annulus and gears. 4 point equispaced fixings. Stainless steel shaft with ball race bearing. Maximum temperature 60°C at the gearcase.

### Contact:

[www.rotalink.com](http://www.rotalink.com)  
[info@rotalink.com](mailto:info@rotalink.com)  
 T: +44 (0)1460 72000

Rotalink Limited  
 Cropmead, Crewkerne  
 Somerset TA18 7HQ, UK

[www.rotalink.com](http://www.rotalink.com)